

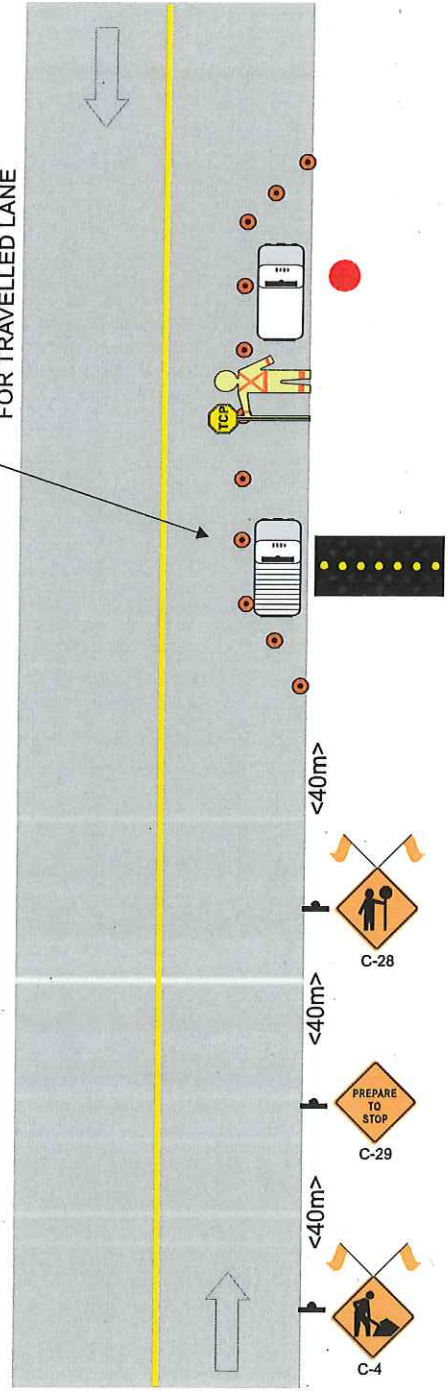


NOTES:

1. Description & Location: HTI stringing aerial cable and access to manholes along Kipp Ave and Mary St, Chilliwack.
2. The traffic control will be provided by 2 TCP's and 1 lane closure vehicle with mounted Flashing Arrow Board and any traffic signalling that may be needed. TCP's to position prior to curved section to gain sight line.
3. Sign location and spacing will be in conformity with the requirements of the Manual for Work on Roadways as published by the MoTH. Changes to layout of signage may be made by the TCP in charge to accommodate traffic and local conditions on site at the time.

NOTE: This traffic plan is not an order of TCP and equipment. It is the Contractor's responsibility to order the resources required for this plan at least 24 hours prior to the works being performed. Call the contracted traffic control company dispatch to confirm your order.

PARKING LANE CLOSURE



THIS TRAFFIC PLAN HAS BEEN PREPARED BY ANSAN INDUSTRIES LTD. BASED, IN PART, ON INFORMATION PROVIDED BY THIRD PARTIES. EVERY EFFORT HAS BEEN MADE TO ENSURE THAT THE PLAN CONFORMS TO THE REQUIREMENTS OF THE MOTOR VEHICLE ACT (RSBC, 1986) CHAPTER 31 AND REGULATIONS AND TO THE BC TRAFFIC CONTROL MANUAL. IMPLEMENTATION OF THIS PLAN WILL BE UNDER THE SUPERVISION OF ANSAN INDUSTRIES LTD. WHO TAKES NO RESPONSIBILITY FOR THE USES TO WHICH THIS PLAN IS PUT BY THIRD PARTIES NOT DIRECTLY UNDER THE SUPERVISION OF ANSAN INDUSTRIES LTD.



TABLE A
Positioning of devices on conventional roadways for various speed limits

Regulatory speed limit km/hr	50	60	70	80	90	100	110	120	130	140	150
1a	35	55	75	90	105	120	135	150	165	180	195
1b	5	8	10	12	15	18	21	24	27	30	33
2	30	30	30	30	30	30	30	30	30	30	30
3	30	30	30	30	30	30	30	30	30	30	30
4	40	60	80	100	120	140	160	180	200	220	240

Distances shown are in metres and are minimums except for 2'.
Cones and tubular markers are generally used in daylight but if used at night must be reflective.
1. Temporary delineator posts are generally used during hours of darkness and must be reflective.
Dimensions 3'a apply to downstream tapes, shoulder tapes, and on-lane work (traffic) signs on travelled lanes where traffic is controlled by TCP's, portable lane control signals or temporary traffic signals.
2. The minimum advance placement distances for inlet signs as well as distances between tubular marker signs are 100 metres.

LEGEND

- TRAFFIC CONTROL PERSON
- LANE CLOSURE TRUCK
- TRUCK MOUNTED FAB
- TRAFFIC CONE (DELINEATOR) TYPE 'D'
- TRAFFIC SIGN LOCATION
- WORK TRUCK
- WORK ROUTE
- MANHOLE LOCATION



ANSAN TRAFFIC CONTROL
Ansan Industries Ltd.
2300 Voke Way Richmond,
British Columbia V6V 1N2
Tel: (604) 270-1541 Fax: (604) 270-1545
Email: plans@ansan.net

CUSTOMER CONTACT:	FOCUS (2614952) PARVEEN AGGARWAL: 604-529-1842
DATE:	2016-SEP-26
PLAN #:	PL 16-778 S SUMAS RD & UNSWORTH RD, CHILLIWACK AERIAL CABLE ACCESS
DWG BY:	CHRISTINE WONG
PAGES:	PG 1